



## Selected SI Advisory projects

### ASSA, Indonesia | Gender Advisory



SI Advisory worked with ASSA to conduct a virtual gender assessment that identified gender gaps and opportunities in the workforce, leadership, supply chain, and customer base. Subsequently, IFC delivered a business skills support program for 100 micro, small, and medium enterprises (MSMEs) in Surabaya, providing training, coaching, and networking opportunities. Participants, of whom more than 85 percent were female, reported an overall satisfaction rate of 9.6 out of 10. Program partners included Tokopedia, Indonesia's largest e-commerce platform and a co-investor in Anteraja.

### Voltaia, Global | Climate Advisory

SI Advisory partnered with Voltaia and EY to identify and prioritize decarbonization opportunities and develop Scope 3 targets from purchased goods and services. The team evaluated options for emissions reduction to align with Voltaia's strategic goals and identify practical actions.

### Equinor-Polenergia, Poland | Stakeholder Engagement



SI Advisory designed and delivered a six-month training program for the Equinor-Polenergia joint venture, which is building two offshore wind farms in the Baltic Sea, off the coast of Poland. Among the topics covered: understanding the business case for delivering local benefits, building a portfolio of community initiatives, and measuring results. The training resulted in the development of a local benefit-sharing strategy, which helped define focus areas and priority initiatives while promoting team building and internal alignment. In addition, through the training, Equinor-Polenergia's local teams acquired skills to strengthen their engagement with local stakeholders, including with MSMEs.

### Guinea Alumina Corporation, Guinea | Local Economic Development, Gender Advisory, Digital Inclusion



SI Advisory's partnership with Guinea Alumina Corporation (GAC) has boosted the company's social and economic development initiatives and enhanced benefits to host communities around mining operations. Underpinned by a strong gender focus, the efforts strengthened GAC's local content, along with strategic community and stakeholder engagement. Among the community development projects supported: antibacterial soap and protective mask production during covid-19, which benefited more than 250, mostly female community members; a local supplier development program that helped 100 SMEs access business opportunities in the GAC supply chain; and a digital inclusion initiative on adopting best data stewardship practices, which will help 7 communities access information on employment and procurement opportunities, as well as the status of their grievances.

### Panama Canal Administration, Panama | Climate Advisory



SI Advisory is designing a climate resilience strategy for the Panama Canal Administration (ACP), focused on decarbonization, adaptation, and just transition. With IFC support, ACP developed a best-in-class greenhouse gas (GHG) inventory covering all three scopes of GHG emissions, set science-based emissions reduction targets, and designed market-based instruments to support the company's goal of reaching net zero by 2050. IFC also designed a governance model for ACP that embeds climate leadership across the C-suite. The work also involved providing guidance on appointing ACP's first chief sustainability officer and developing a stakeholder engagement plan to enhance ACP's climate action engagement, including mapping of initiatives to decarbonize the maritime value chain.

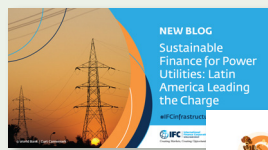
### Azito, Côte d'Ivoire | Revenue Management



SI Advisory helped to strengthen the management skills of the Azito community's leaders, enhancing their ability to translate financial resources into local development. The support included setting up an inclusive governance entity, with guidance on strengthening the role of women and youth in resource use decisions, securing funds for future generations, implementing and supervising community projects, and using participatory selection and annual budgeting in all projects. Undertaken during the covid-19 pandemic, the work also focused on enhancing the local health center's capabilities and the health knowledge of the Attieke women's cooperative.

## Knowledge and thought leadership

- [Voltaia Looks to Decarbonize its Renewable Energy Supply Chain](#)
- [Sustainable Finance for Power Utilities: Latin America Leading the Charge](#)
- [Transformative Finance: Key to Accelerating Equality](#)
- [Connected Communities: Resources, Impacts, and Lessons from the Canada-IFC Local Economic Development Program](#)
- [Bogotá's women in the e-bus driver's seat](#)
- [Engineering Inclusivity: Infrastructure for Everyone](#)



## IFC Sustainable Infrastructure Advisory contacts

Henriette Kolb	Washington, DC (Global Manager)	+1 202 751 8154
Adriana Eftimie	Washington, DC (Gender)	+1 202 476 9520
Alla Morrison	Vienna (Europe)	+1 202 415 2689
Arjun Bhalla	Washington, DC (Asia)	+1 202 476 0096
Carla Toledo Gamero	Panama City (Latin America)	+57 32 2250
María Arsenova	Washington, DC (Community Investment)	+1 202 473 5290
Rodrigue Djahlin	Abidjan (Africa)	+225 565 857516
Stephanie Sines	Dakar (Middle East and Central Asia)	+221 338 597149

hkolb@ifc.org
aeftimie@ifc.org
amorrison@ifc.org
abhalla@ifc.org
ctoledo@ifc.org
marsenova@ifc.org
rdjahlin@ifc.org
ssines@ifc.org

